



ANNUAL PARISH MEETING

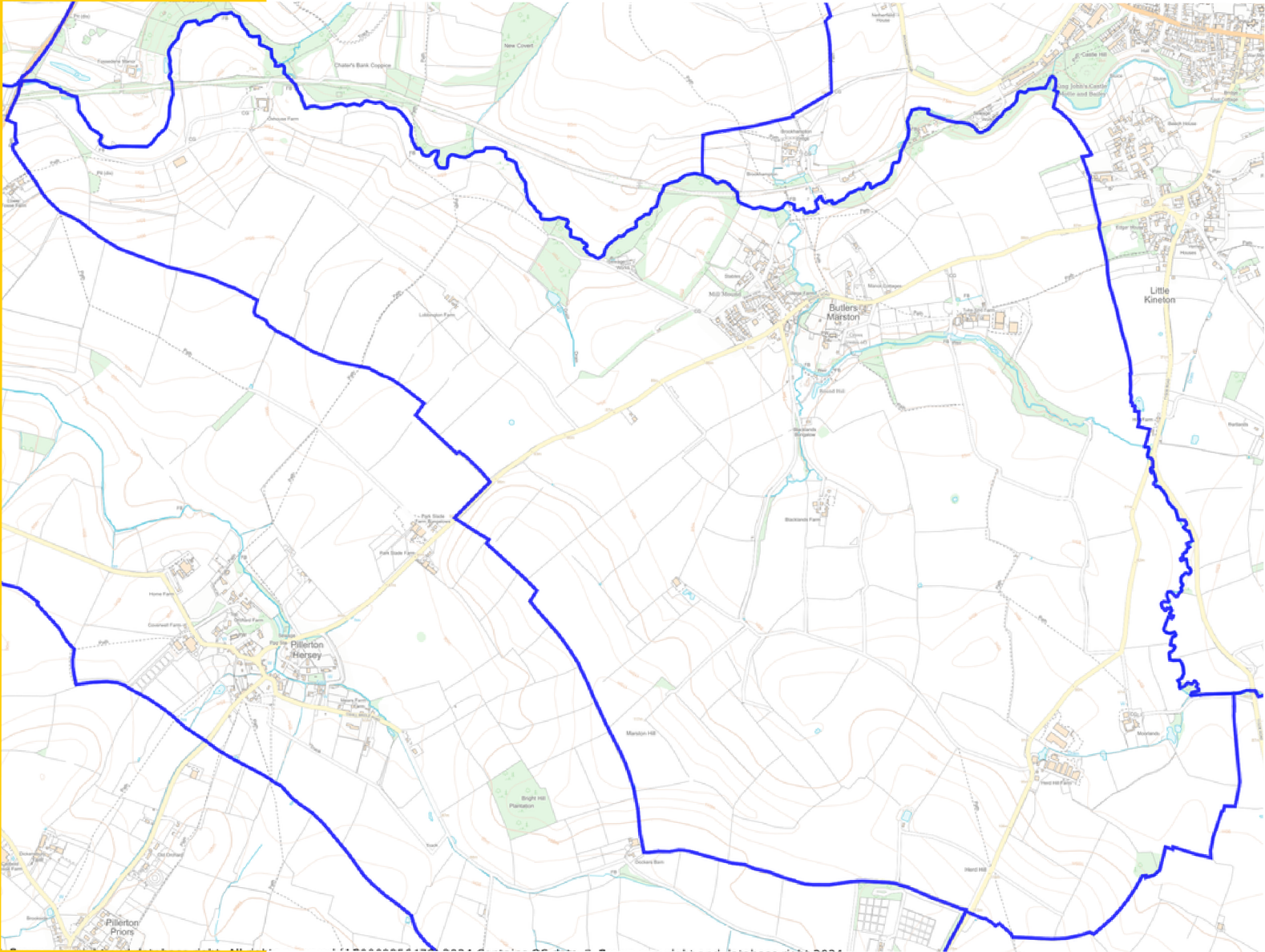
Agenda

- UPDATE ON THE PARISH COUNCIL'S YEAR
- IMPROVEMENTS TO THE FOOTPATHS
- CHURCH REORDERING GROUP UPDATES
- RELOCATION OF THE BUS STOP
- OPEN QUESTIONS



The last 12 months

Butlers Marston
Parish Council



With three new councillors being appointed in May 2023, the last 12 months have been very busy for the Parish Council.



Bus Shelter



Retaining Wall - Aim to build wall between the bus shelter and phone box with stone and breezeblocks donated by the Kennel Hill developer

Noticeboard - Received a grant for a new noticeboard which has been delivered and stored. Waiting for rotten trees to be removed before installed next to the bus shelter like before.

Postbox - the current post box is unstable which Royal Mail are aware and will review whether this should be replaced.

Repurpose of the bus Shelter/Phone box - The plan was to convert the phone box into a book exchange box, however residents' views will be sought as to what they would like to see.

Speedwatch



- Butlers Marston Community SpeedWatch (BMCSW) was set-up during the Summer of 2022.
- part of the wider SpeedWatch community and shared a gun with other villages in the Warwickshire area
- Over the course of the last 12 months the BMCSW group loaned the gun on three separate occasions, with each occasion lasting between 4-6 weeks.
- During the 12 months, a total of 655 vehicles were recorded coming through the village with 3 accurately being reported to the police for travelling more than the 30-mph speed limit.
- At the end of 2023 Council approved the purchase of a police approved affordable device which will enable more frequent monitoring of vehicle speeds through the village which will help in alleviating any parishioner concerns.

Village Green

Grass Cutting - Mowing of the village greens has continued to be challenging during the last 12 months as BM kept being missed. New contractors in April with six cuts this year including 'No Mow May'

Tree Surgery - Following the tree survey undertaken in 2021 there were several trees which needed to be dealt with in 2024. Ownership of the trees on the green is still unclear but we are maintaining until this is confirmed.

Hedges - Like the challenge of grass cutting, the council has had several communications with various parties responsible for the upkeep of hedges around the village over the last 12 months. This is not the council's responsibility however we assist to communicate to all parties.



Additional

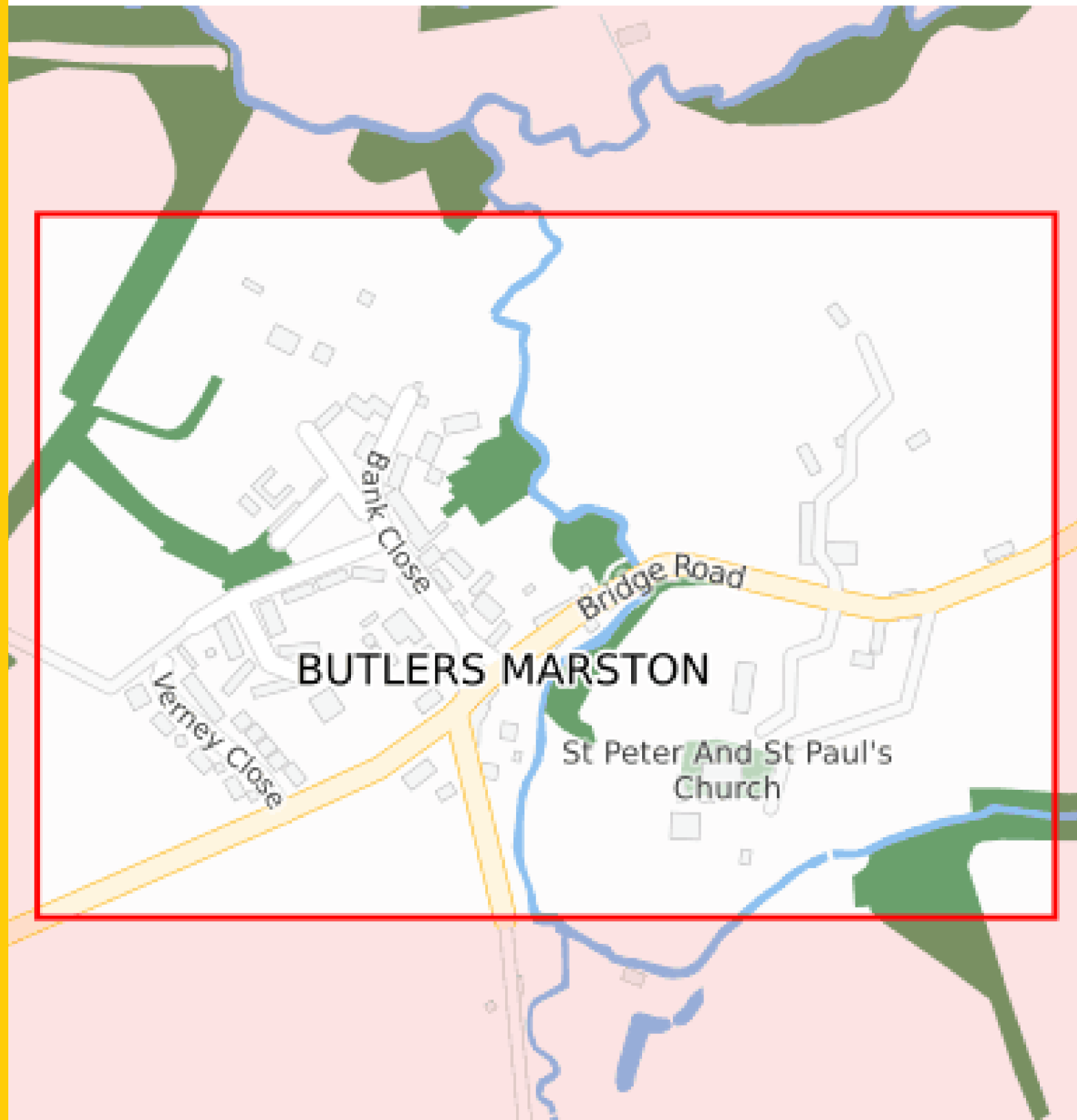
War Memorial - The War Memorials Trust reviewed images of the Butlers Marston Cross (War Memorial) and confirmed they have no major concerns. However, they did note there is some biological growth which is making some of the inscriptions difficult to read and there are some minor areas of pointing missing, such as around the base.

Village Newsletter - It was agreed that as the council is a regular contributor to the village newsletter then the council would contribute to the cost of production. By contributing we hope to develop the newsletter and gain more contributions from the parish.

Coronation Celebrations - We all celebrated the Kings Coronation in May with a well attended village picnic, complete with children's activities, competitions and a beautiful warm sunny day!



Map showing the extent of
Butlers Marston



Contains OS data © Crown copyright and database right 2021

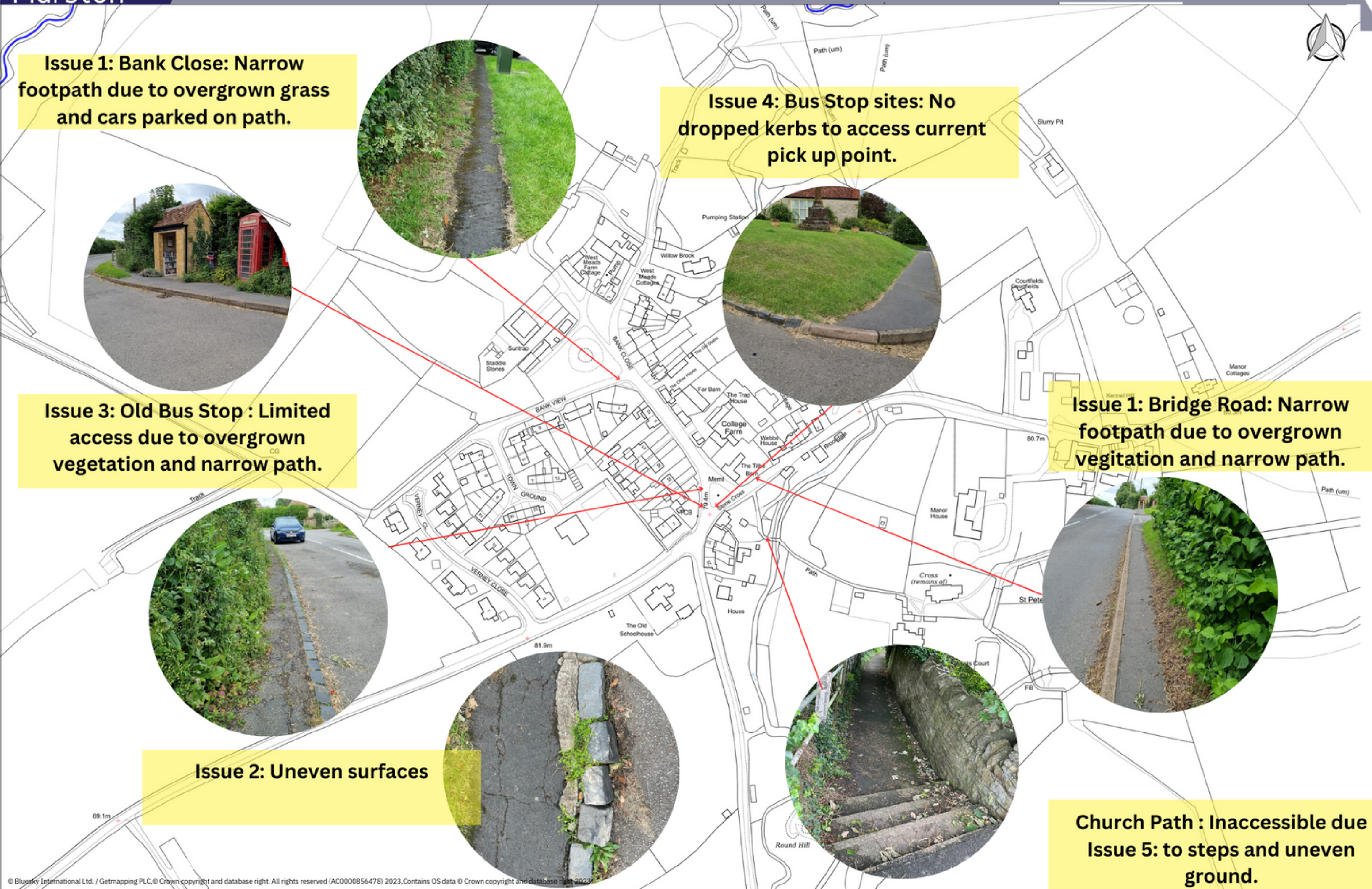
Village Footpaths

Butlers
Marston
Parish Council

The village has several footpaths that need attention from uneven surfaces, to inconsistent path widths. Generally accessibility is restricted around the village due to the lack of dropped kerbs or ramps and in extreme weather the lack of kerbs can cause flooding to local properties.

butlersmarstonvillage.co.uk

FOOTPATH IMPROVEMENT



- **Issue 1** - Widening the paths around the village.
- **Issue 2** - Addressing the uneven surface of paths.
- **Issue 3** - Old bus stop & Phone Box
- **Issue 4** - Access to bus stops
- **Issue 5** - Access & condition of church path

ISSUE 1 Widening of paths corner of Bank Close/Bank View, Bank View Town Ground and Bridge Road, opposite the war memorial and Bridge Road

These paths on these corners are less than 1m wide. The recent retarmacing seemed to only cover the exposed ground rather than recover much of the previous path that has been covered by vegetation over time.



On the corner of Bank View/Bank Close there are two possible walk ways neither more than 1m wide in places less than 50cm. These narrow footpaths are further reduced by cars and overgrown hedging.



The path around past the existing bus shelter along Bridge Road towards Verney Close is narrow and uneven.



ISSUE 2 Addressing the uneven surfaces of paths

These photos are all taken along a short stretch of path between Bank Close and the war memorial. The ground is uneven, kerb stones are loose making it very difficult for those who are not steady on their feet, use a frame, pram or wheelchair.



ISSUE 2 Addressing the uneven surfaces of paths

These photos are all taken along a short stretch of path between Bank Close and the war memorial. The ground is uneven, kerb stones are loose making it very difficult for those who are not steady on their feet, use a frame, pram or wheelchair.



ISSUE 2 Addressing the uneven surfaces of paths

The recent covering of tarmac has already started to be worn away on Verney Close.



ISSUE 3 Old bus stop bank and phone box improvements

The Parish Council is looking to develop the area around the old phone box. Using stone to hold back the bank behind and create shelves in the telephone box to house books.



ISSUE 4 Access to existing and proposed bus stops, lack of dropped kerbs



ISSUE 5 Access to church via footpath

Currently, access to the church from the village is only via a footpath that is not maintained and is falling into a state of disrepair. The only other access to church (the only community building in the village) is along the main road which does not have footpaths after the bridge on Bridge Road.



ISSUE 5 Access to church via footpath

The path then cross a bridge (renovated by SDC in XXXX) and is tarmaced up the remainder of the way before the final set of steps. This is uneven and dangerous, particulalry as the walkway is not lit. Frequently has debris due to being under trees and can become slippy.



ISSUE 5 Access to church via footpath

The path then slopes up to a final step of steps before entering the church yard.





ANNUAL PARISH MEETING

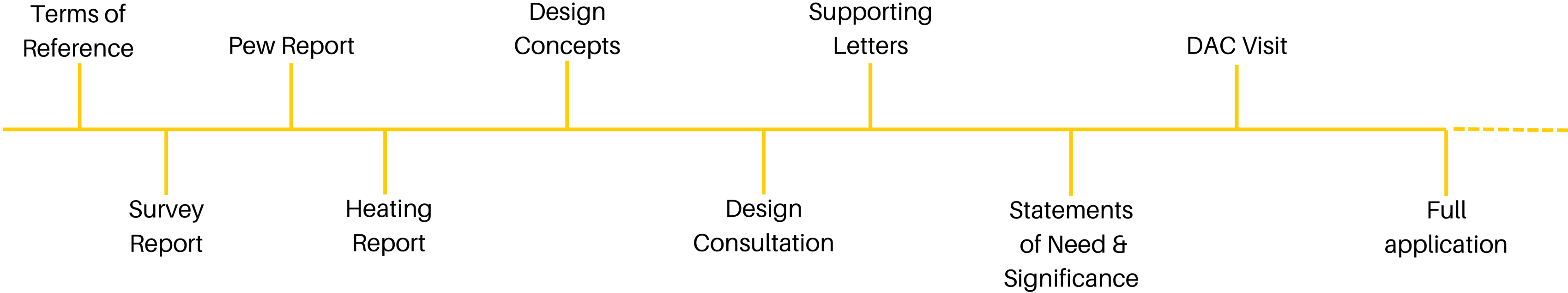
Reorder Group

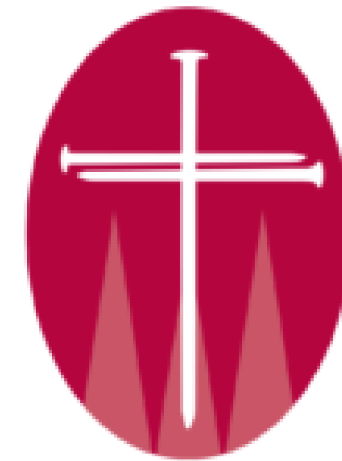


The time has come to address a few issues concerning the fabric of our much loved and well used Church. Like most buildings of its age, essential repairs are necessary to preserve the fabric of the building. For example, the heating system needs updating and many of the pews are badly infected with woodworm and the wooden base/platform on which they stand has started to break apart. These works, including any other changes are known as "re-ordering" and are carried out using the Church of England's "faculty" process.

butlersmarstonvillage.co.uk

Schedule





Diocesan Advisory Committee

Working for the care of churches they help give advise on a whole range of topics that relate to caring for and developing church buildings so that they may be enjoyed for generations to come.

Churches are working buildings that need to be able to adapt as their use changes and diversifies. Historically churches have been altered and rearranged throughout their history to meet changing needs, and this is no more apparent than it is today.

"I think you have the beginnings of a a really fruitful project [in Butlers Marston]. It feels like it has more chance of success because i think you can, demonstrate a real need ... have an active social community ... are partnering with the Parish Council and local social groups..."

Clair Strachan, DAC

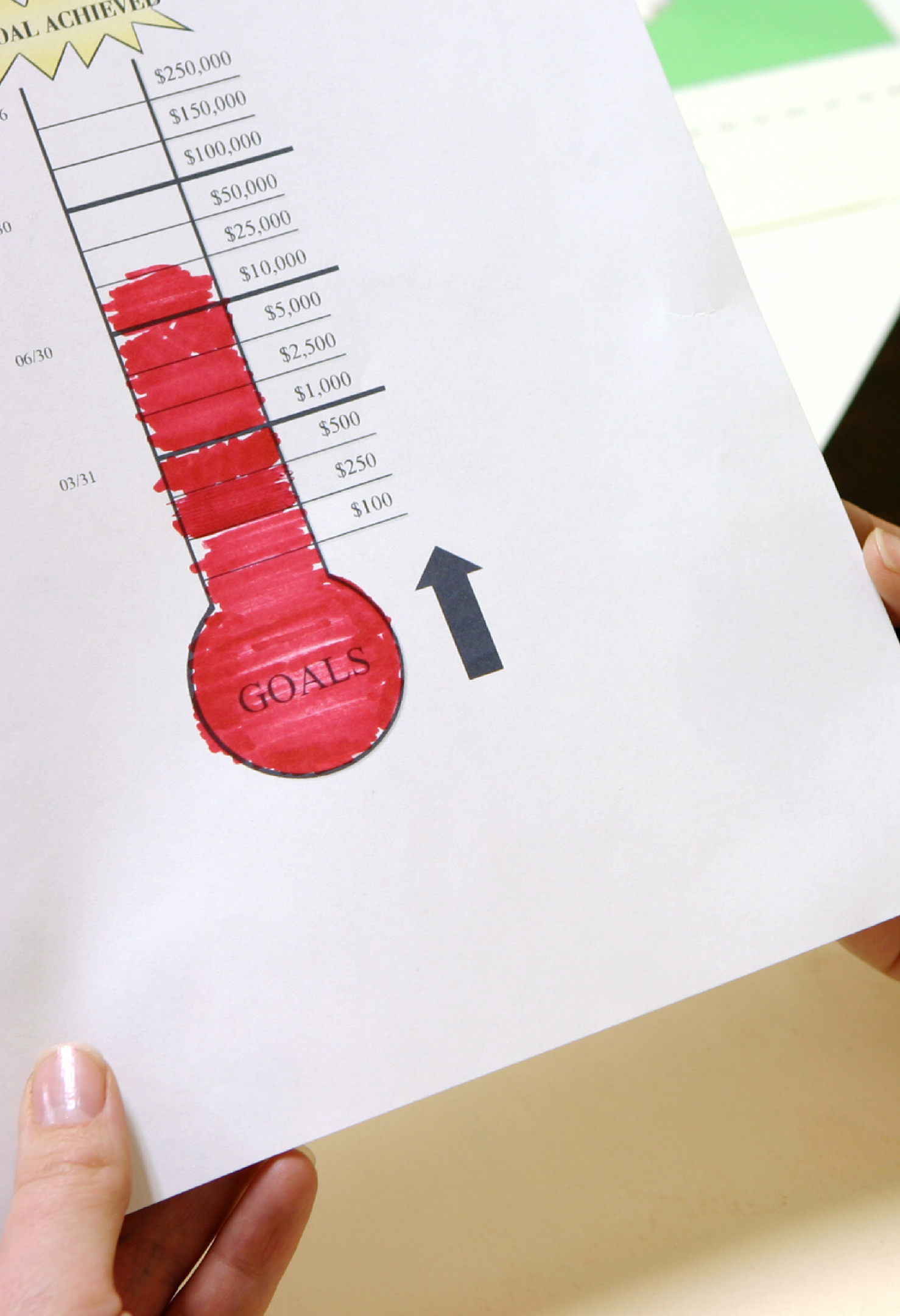
butlersmarstonvillage.co.uk



Heating



- Need to consider areas of the church as zones
- A multiple heating solution
 - Underfloor heating (all electric or wet)
 - Radiant heating (tubes, Infra-red, panels, radiators, air)
 - Traditional space heating
 - Heat pumps, Solar + battery
 - Ground source
- Insulation considerations
- Net zero - In February 2020 for the whole of the Church of England to achieve net zero carbon by 2030



Funding



Depending on our final adopted design concept we will need to look at multiple funding opportunities from both secular and non-secular sources.

Church - All Churches Trust, Archer Trust, Cinnamon Network,

Retailers foundations - Asda, B&Q, Co-op, Greggs, Sainsburys, Screwfix

Charities - Henry Smith, Hobson, Joseph Rank, Trusthouse

Lottery - Arts Council England, National Lottery Community Fund



ANNUAL PARISH MEETING

Eco Church



ECO Church, run by A Rocha UK, aims to help churches of all denominations make the link between environmental issues and the Christian faith, and to respond with practical action in the church, in the lives of individuals, and in the local and global community.

At the heart of Eco Church is a unique, online survey that enables us as a church to both record what we are already doing to care for God's earth, and to reflect on what further steps we can take and then to act accordingly. The survey covers all areas of church life.



butlersmarstonvillage.co.uk



ANNUAL PARISH MEETING

Reorder Group



GET IN CONTACT OR INVOLVED

bmccr.group@gmail.com



butlersmarstonvillage.co.uk/bmreorder



DESIGN CONSULTATION MEETING

The next public meeting will hopefully be in September when we plan to showcase several design concepts to gain your views before we meet with the DAC and consider submitting an application.

butlersmarstonvillage.co.uk

Bus Stops



Following a number of residents concerns regarding the safety of the current bus stops the council investigated what could be done to improve the bus stop facilities.



In 2019 the council organised a site visit by the Passenger Transport Publicity & Development Lead Officer who confirmed the current bus stops were officially adopted in 2010 via a desk investigation most likely from the previous bus stop locations.

These locations are not ideal for potential users and the council have been working with WCC to identify alternative locations which are safer for users and provide a better facility for the community.

butlersmarstonvillage.co.uk



BACKGROUND

- The official bus stops are located at the **bus shelter** and between **Pennyfarthing Cottage** and **Stone Cross Cottage**. 
- The adopted bus stops are at the **Stone Cross Memorial** and the **junction of Fish Lane**. 
- Currently three buses are scheduled to stop in Butlers Marston 12 times per day.
- Bus usage fluctuates throughout the year but is estimated to be currently less than 10 people per day.

butlersmarstonvillage.co.uk



WHY RELOCATION THE BUS STOPS

SAFETY

The current official and adopted bus stops are not safe locations for users to wait for a bus, with inadequate footpath widths and kerb heights for mobility access to and off the bus.

BETTER FACILITIES

Relocating the bus stops will enable us to upgrade the bus stop facilities with a bus pole, road markings and improved accessibility to and from the bus stops with dropped kerbs and tactile paving.

FUTURE PROOFING

Improving the bus stop locations is investing in our community and providing better facilities for the users of today and tomorrow. We have a duty to encourage residents to use public transport and providing a safe, fully accessible bus stop is essential to encouraging more users.



PROPOSAL

Butlers Marston Bus Stop relocation options



- **Option 1a & 1b** has existing footpaths for pedestrian & disabled access. one pole located near Church path. drop kerbs could be installed with tactile paving to join paths up to the shelter.
- **Option 2a & 2b** only has one existing footpath so would require build out to create bus stop 2b. Safety concerns for users crossing and standing at 2b stop. site 2a could restrict vehicle visibility overtaking stationary buses.



OUTLINE COSTS

Feasibility Study - To carry out a full feasibility study with drawings and road safety audit has cost approximately **£3,500** which WCC have covered with County Councillor Mills support.

Option 1a & 1b - is estimated to cost **£12,485** including dropped kerbs and tactile paving from the post box to the two stop locations.

Option 2a & 2b - is estimated to costs **£44,935** including new bus layby at the Old School site 2a and a build out a hardstanding platform at site 2b , dropped kerbs and tactile paving at each bus stop location.

FUNDING OPTIONS

County Councillor Delegated Budget

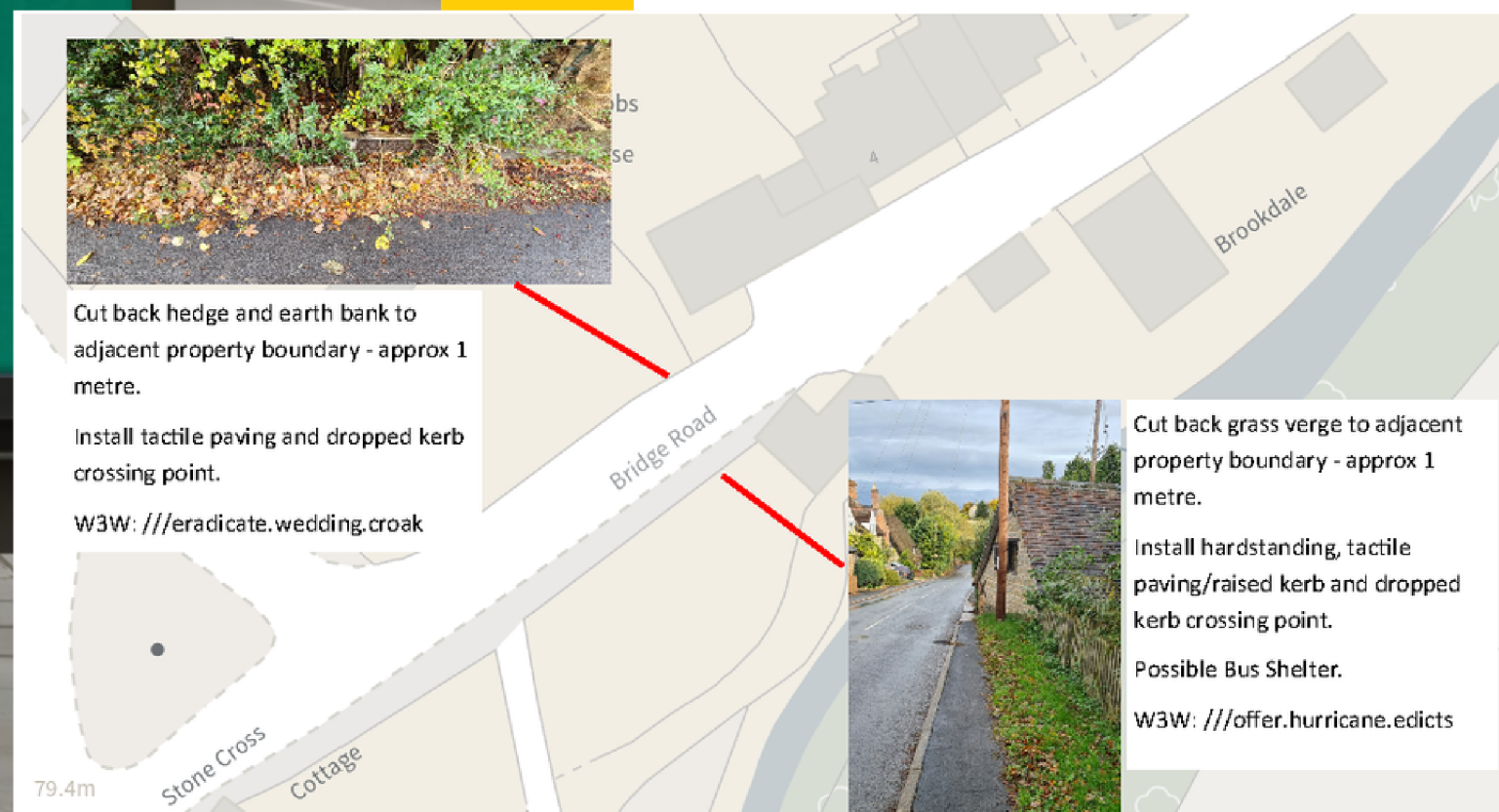
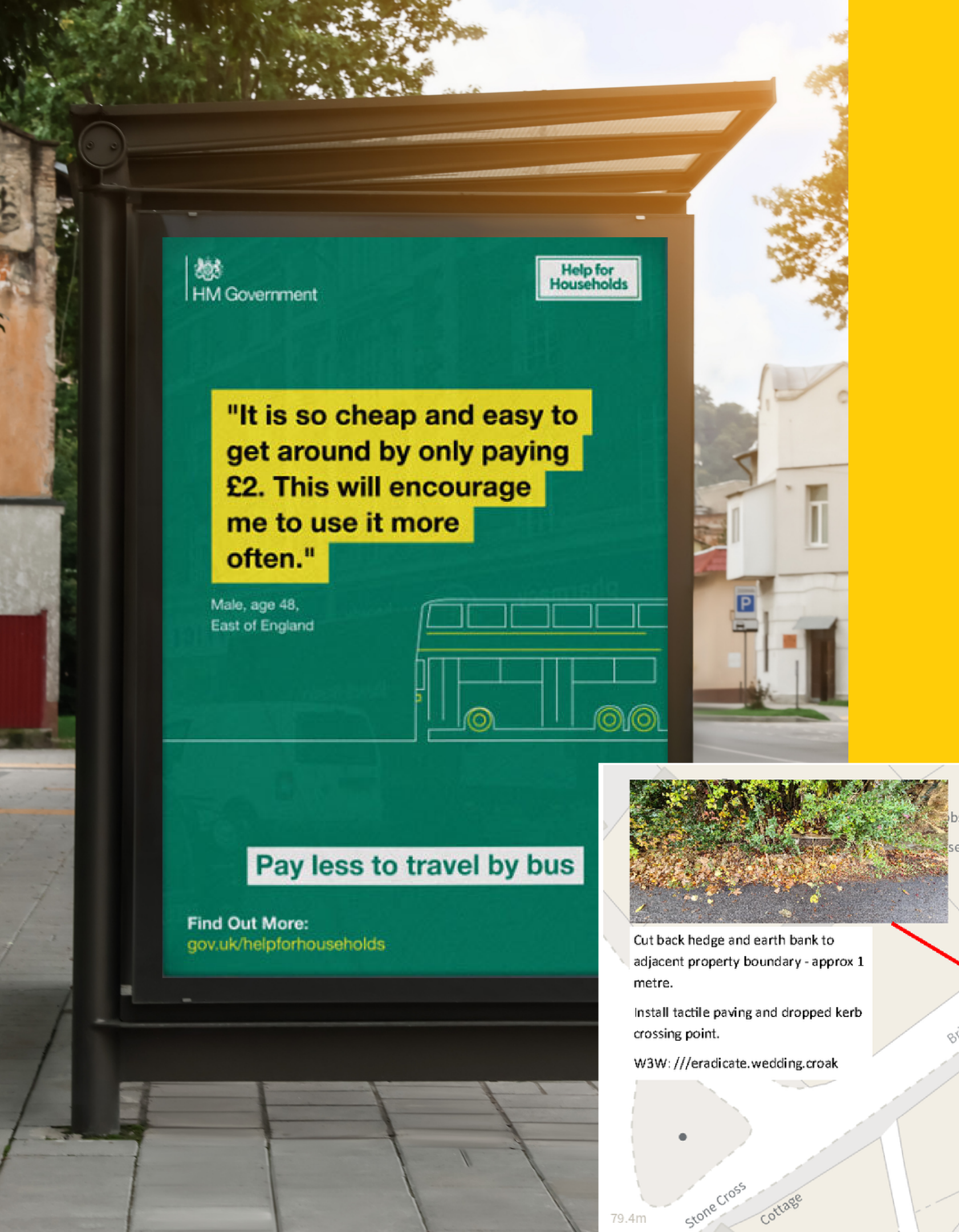
WCC Passanger Transport

Alternatives - Local fundraising initiatives, Stratford District Council grants

CONCLUSION

WCC recommends location 1a & 1b for the bus stops in Butlers Marston:

- Clearly visible by motorists entering and leaving the village
- Allows vehicles to overtake stationary buses with good forward visibility.
- Improve accessibility for bus passengers
- Provides clearer stop locations for buses
- Safer locations for waiting/alighting passengers
- Improves the facilities in the Butlers Marston





**THANK
YOU**